

# Loss in Weight System



Wastewater Treatment



Water Treatment



Flue Gas Treatment

## Gravimetric Feeding

Sodimate can supply loss in weight systems for applications that need high powder metering accuracy, instantaneous flowrate and emptying the full storage of dry polymer.

The operation is simple, reliable and very accurate to suit high industrial standards.

This equipment allows gravimetric feeding from a buffer to a hopper located under the silo cone or near the injection point. Loss-in-weight systems can also be integrated after big bag emptying units.

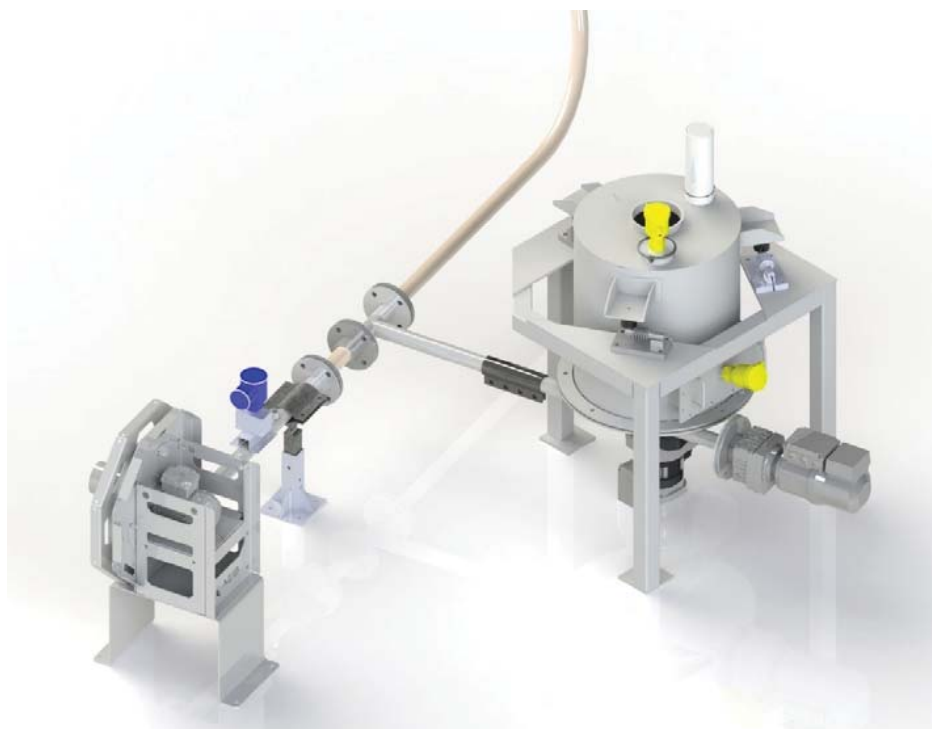
### Operation:

The weighted hopper is fed at a rate 10 times faster than the required feedrate. The data from the load cells is used to calculate a live and accurate flowrate. The real weight is compared to the set value (goal).

An analog or digital output is sent to the controls that regulate the speed of the Variable Frequency Drive metering device.

### Advantages:

- Reliable dry consumption monitoring
- Automatic calibration
- Low/High level alarms
- Scaling possible at anytime
- Troubleshooting mode





Wastewater Treatment



Water Treatment



Flue Gas Treatment

## Weighted hoppers for Sodium Bicarbonate

### Products:

- Powdered Activated Carbon
- Hydrated Lime with high specific surface area
- Soda Ash
- Clay
- Polymer
- Other dry powder per request

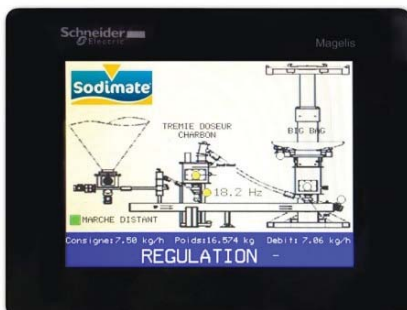
### Features:

- Dry consumption monitoring
- Total of the consumption
- Adjusting the flowrate
- Batch mode



### Options:

- ATEX certification
- Made of painted carbon steel or stainless steel
- Fault detection system for load cells
- NEMA 4X Control panel
- Communication protocol



## Loss in weight System

