

Pump skid:

In order to convey and inject dry products over a long distance, dry powders are mized with water to create a slurry.

Sodimate designed an optimal turnkey pump skid system that includes pumps, valves, and pressure reducers all attached to a frame.

The pump draws the liquid into a pipe by using two rotating rollers and compressing the reinforced rubber tube. This compression creates a vacuum effect at the pump inlet and pushes the slurry through the outlet.

This process ensures that the slurry will only come in contact with the hose, reducing the risk for contamination and subpar quality.

Our pump skids include a flush system to automatically clean the pumps when the installation is stopped. Sodimate can also integrate a backup pump with an automatic switch for the pump on duty

Advantages:

Low maintenance therefore reduced operating cost : the hose is the only wearing part

- Discharge pressure up to 15 bar
- No contamination with other liquid
- All parts assembled on a single frame

Peristaltic/Hose pump skid



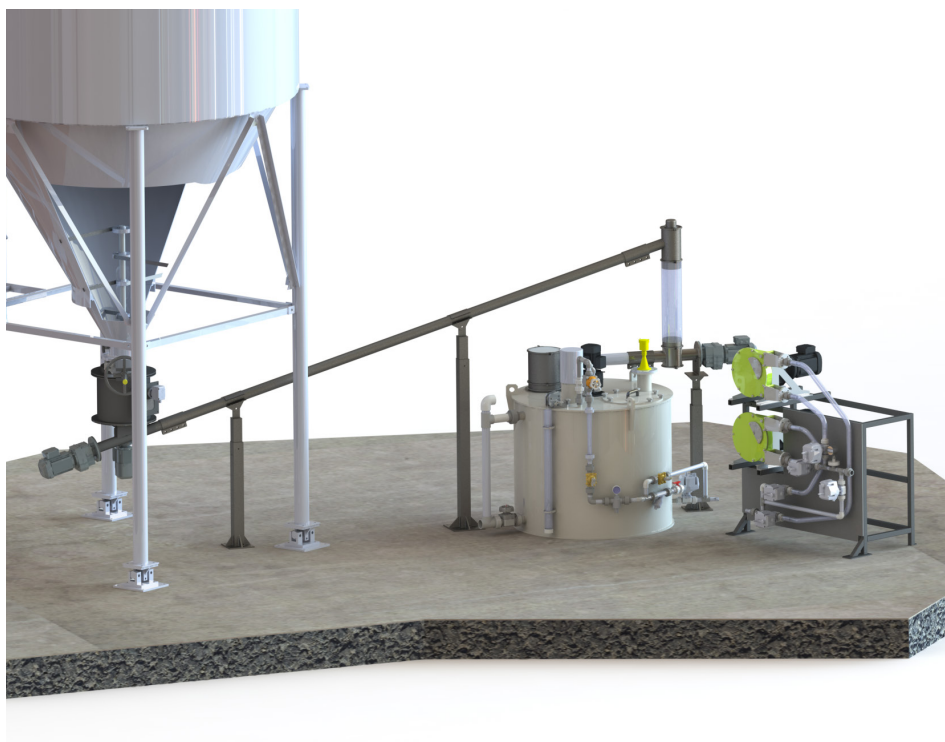
Waste water



Drinking water



Air & smoke





Waste water



Drinking water



Air & smoke

Product conveyed:

- Powdered Activated Carbon
- Lime slurry
- Polymer
- Sodium Carbonate
- Other products per request

Features:

The pump skid is a complete set including pumps, valves, analog controllers,...

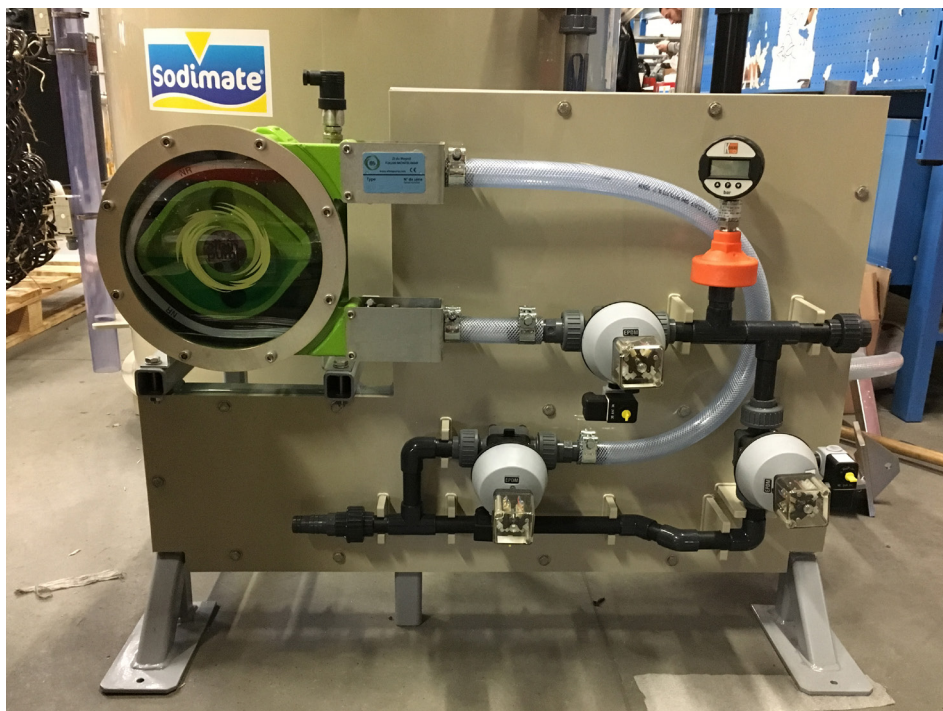
The pump's hose is made of high quality rubber reinforced with polyamide to ensure a better lifespan.

Options:

- Low maintenance therefore reduced operating cost: the hose is the only wearing part
- Discharge pressure up to 15 bar
- No contamination with other liquid

All parts assembled on a single frame

Single pump skid



Double pump skid

